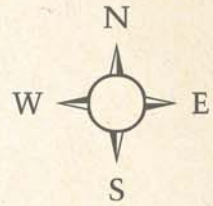


Plan showing proposed subdivision of a parcel of land into 22 lots, being combination of entry no.6751, reg. no.26, and entry no.5618, register no.18, situated along Western Lagoon, Belize District.



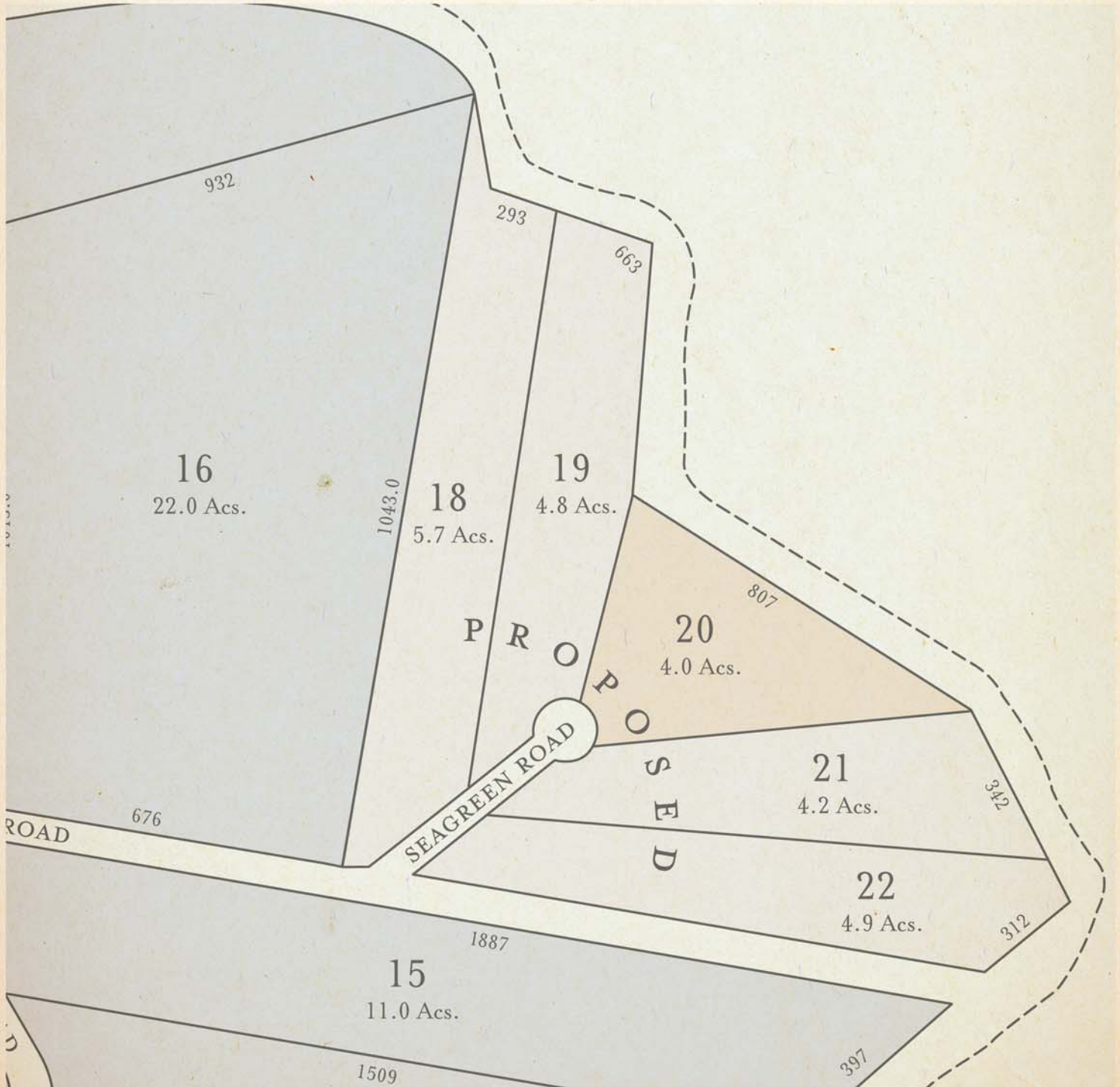
NOTE:

DISTANCES ARE IN FEET

DIAMETER OF CUL-DE-SAC IS 100 FEET

ACREAGES ARE APPROXIMATE AND CALCULATED BY AUTOCAD

SCALE: 1/5,000



LOT 20. PROPOSED



CYAN BELIZE

Nature's favourite colour.