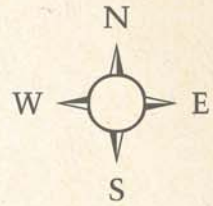
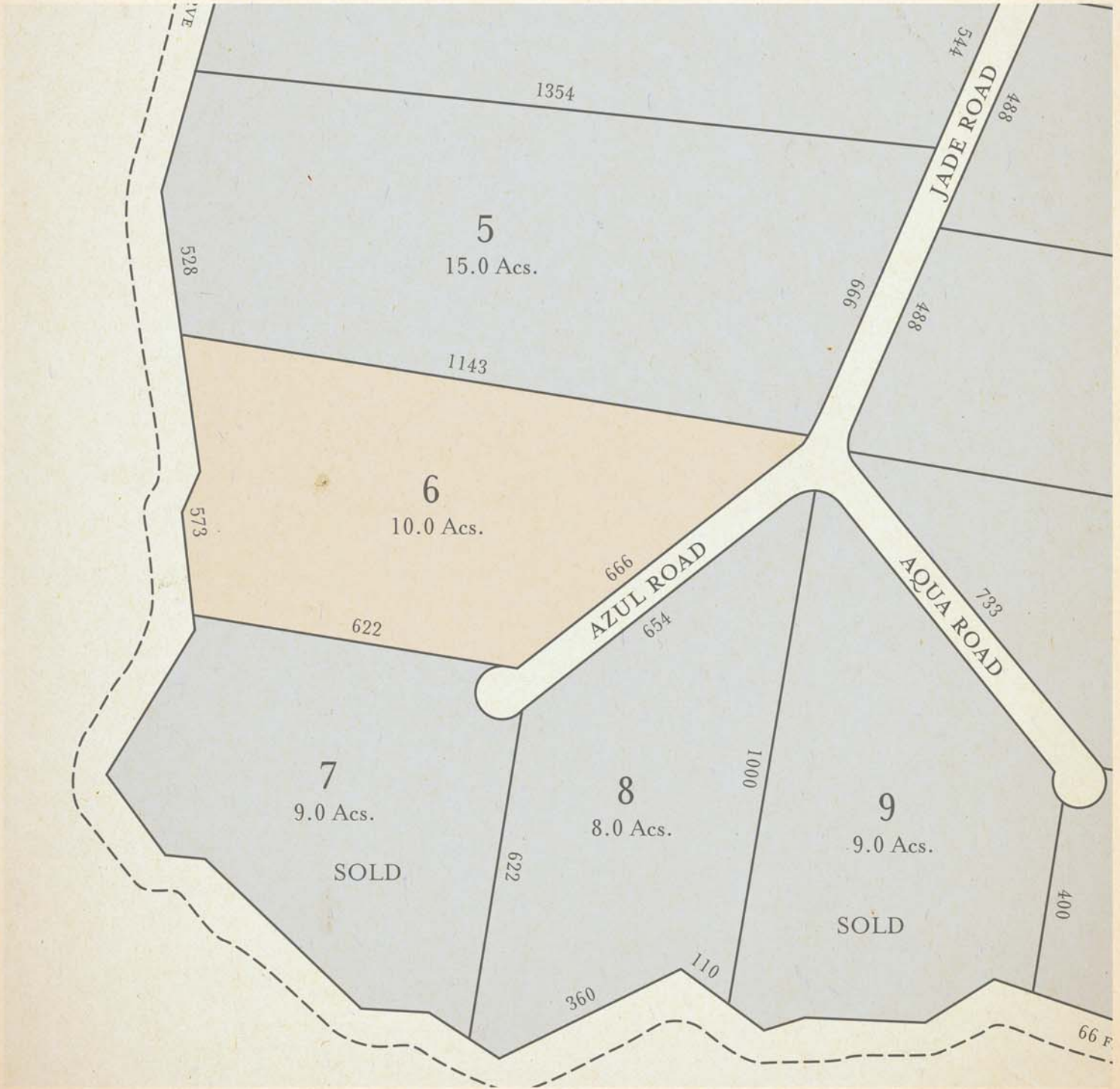


Plan showing proposed subdivision of a parcel of land into 22 lots, being combination of entry no.6751, reg. no.26, and entry no.5618, register no.18, situated along Western Lagoon, Belize District.

NOTE:
 DISTANCES ARE IN FEET
 DIAMETER OF CUL-DE-SAC IS 100 FEET
 ACREAGES ARE APPROXIMATE AND CALCULATED BY AUTOCAD



SCALE: 1/5,000



LOT 6. MANATEE VIEW



CYAN BELIZE

Nature's favourite colour.