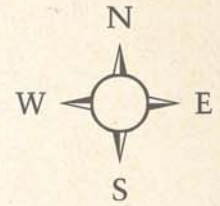
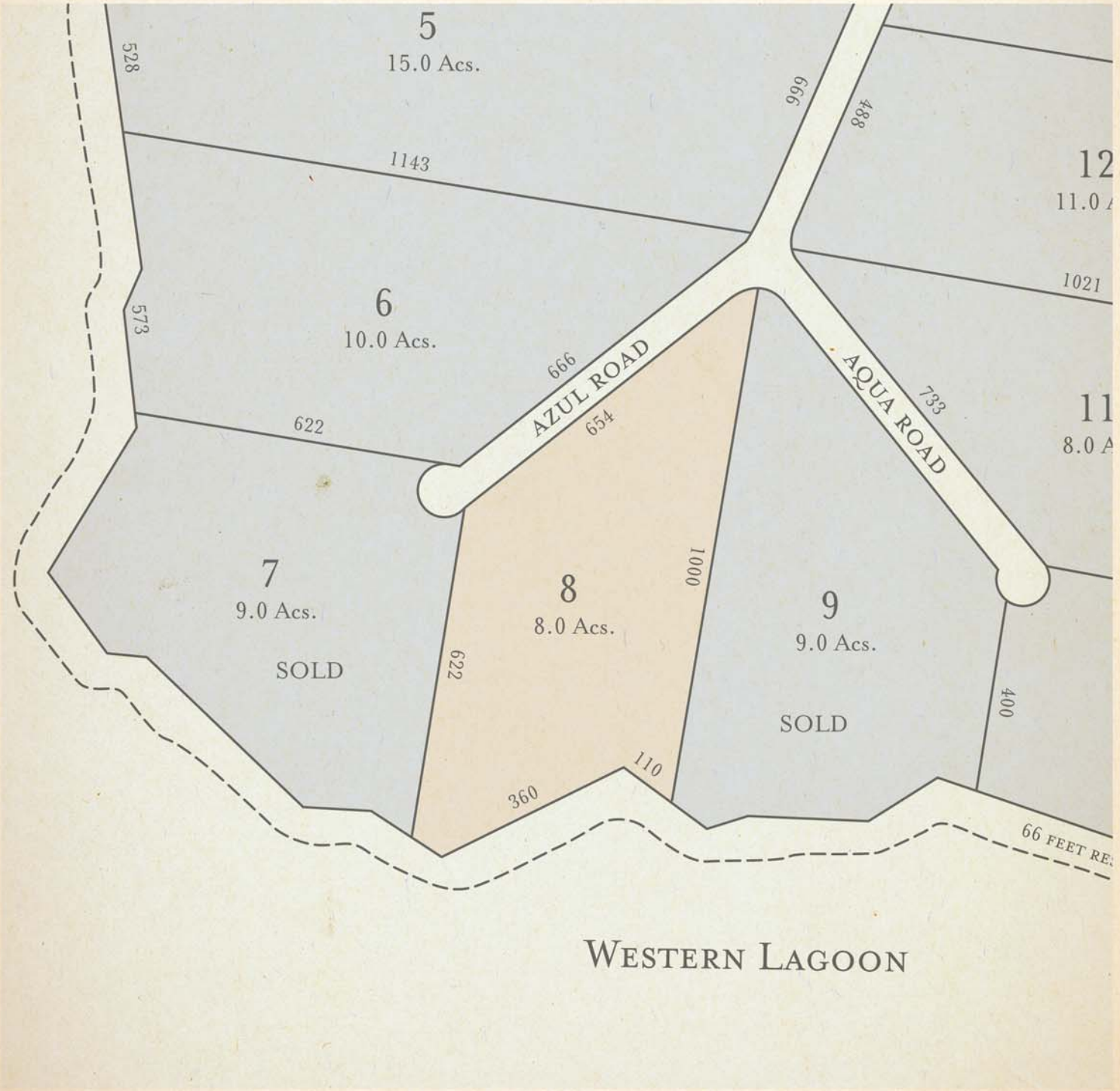


Plan showing proposed subdivision of a parcel of land into 22 lots, being combination of entry no.6751, reg. no.26, and entry no.5618, register no.18, situated along Western Lagoon, Belize District.



NOTE:
 DISTANCES ARE IN FEET
 DIAMETER OF CUL-DE-SAC IS 100 FEET
 ACREAGES ARE APPROXIMATE AND CALCULATED BY AUTOCAD

SCALE: 1/5,000



LOT 8. MAN OF WAR



Nature's favourite colour.